

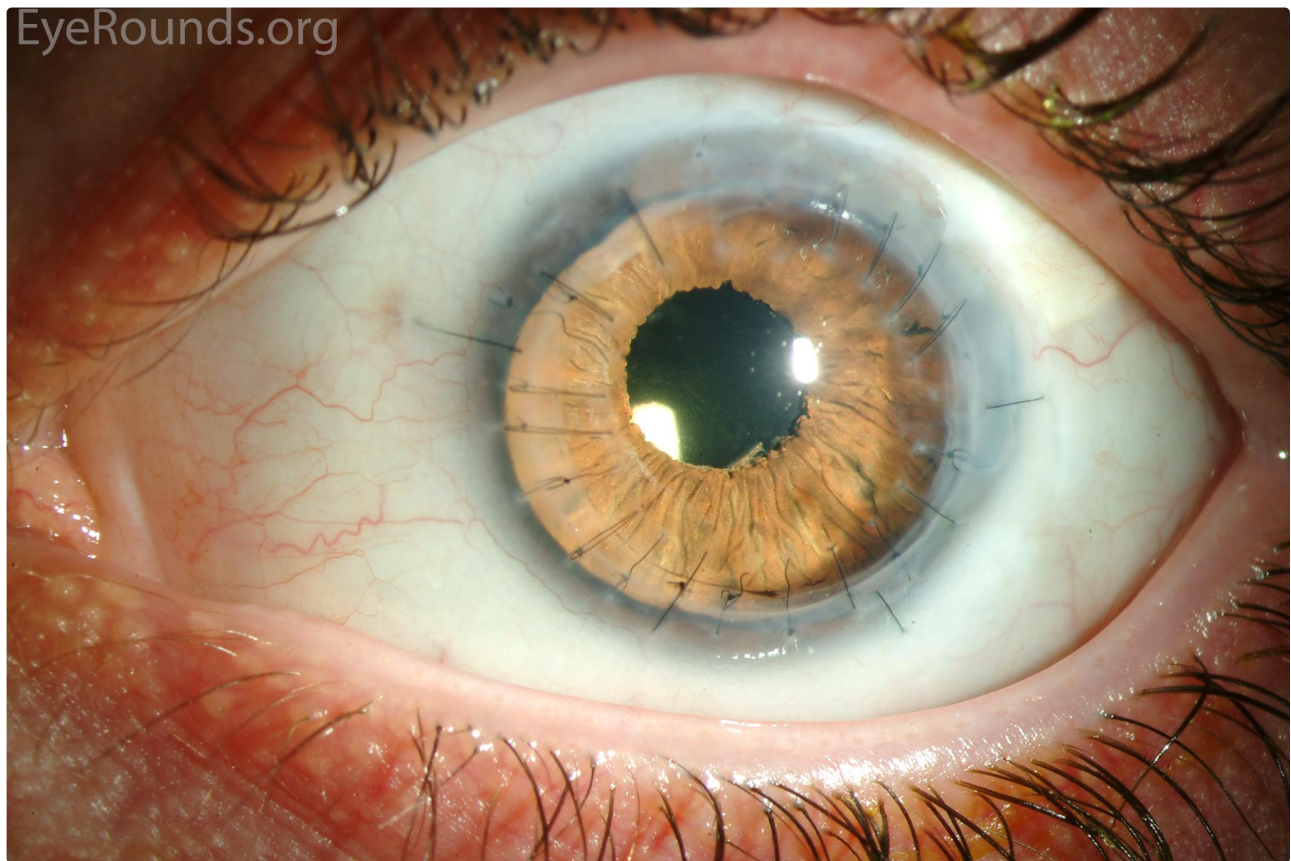
CustomFlex iris prosthesis and penetrating keratoplasty (PKP) for acanthamoeba keratitis

Category(ies): Cornea, External Disease, Iris

Contributor: [Jesse Vislisel, MD](#)

Photographer: Stefani Karakas, CRA

The CustomFlex prosthesis is an artificial iris made of a foldable silicone elastomer. The device is custom-made to match the contralateral eye in patients with unilateral defects or designed from patient selection in the case of bilateral aniridia. This photo shows the appearance of one of these devices that was implanted in a patient who experienced persistent mydriasis after acanthamoeba keratitis. The patient also has a full-thickness corneal transplant. Read the related case report for more information about [aniridia](#) and its management.



 Enlarge

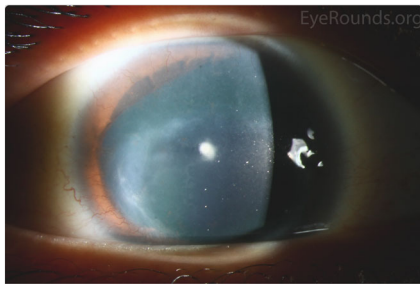
 Download

Image Permissions:



Ophthalmic Atlas Images by [EyeRounds.org](#), [The University of Iowa](#) are licensed under a [Creative Commons Attribution-NonCommercial-NoDerivs 3.0 Unported License](#).

Related Articles



[Related Case: Congenital Aniridia](#)

Address

University of Iowa
Roy J. and Lucille A. Carver College
of Medicine
Department of Ophthalmology and
Visual Sciences
200 Hawkins Drive
Iowa City, IA 52242

[Support Us](#)

Legal

Copyright © 2019 The University of
Iowa. All Rights Reserved
[Report an issue with this page](#)
[Web Privacy Policy](#) |
[Nondiscrimination Statement](#)

Related Links

[Cataract Surgery for Greenhorns](#)
[EyeTransillumination](#)
[Gonioscopy.org](#)
[Iowa Glaucoma Curriculum](#)
[Iowa Wet Lab](#)
[Patient Information](#)
[Stone Rounds](#)
[The Best Hits Bookshelf](#)

EyeRounds Social Media

Follow



[Receive notification of new cases,
sign up here](#)
[Contact Us](#)
[Submit a Suggestion](#)